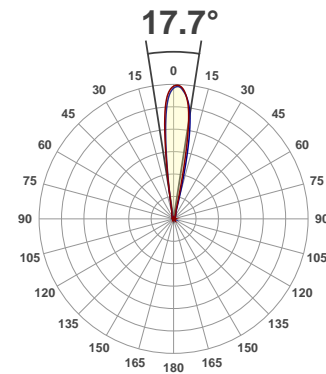
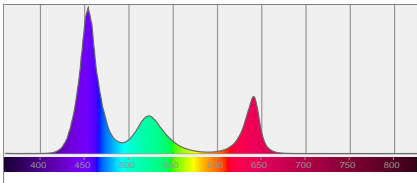
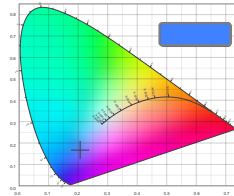
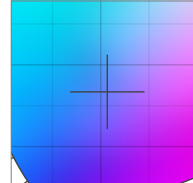
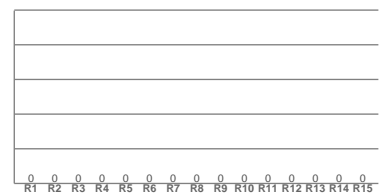
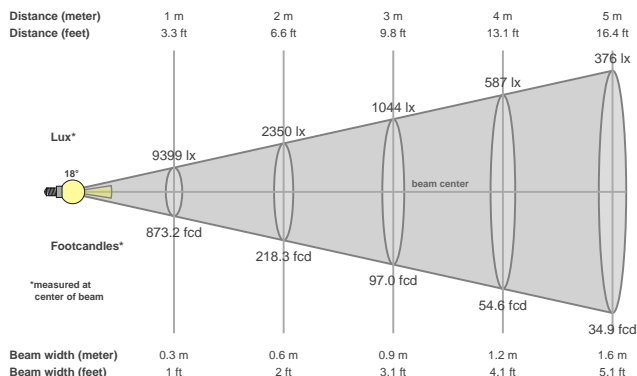


Light efficiency:**17 Lumen/Watt****Light quality:****CRI: 0.0****Color temperature:****0 K****Product name:****Dotz Par 100****Test:****Full On w/ Lens****Date:****4/17/2017****Output: 1450 lm Power consumption: 83.9 W Peak: 9547 cd****Spectral distribution****Color coordinates****Zoom color point****CRI R values**

Color temperature	Color rendering index	Red component	Color fidelity	Color gamut	Color quality scale	Color coordinate cie 1931	Color coordinate cie 1931	Color coordinate	Color coordinate	Color divition from black body
CCT	CRI	CRI R9	TM30 Rf	TM30 Rg	CQS	x	y	u	v	Δuv
0 K	0.0	0.0	0.0	0.0	0.0	0.207	0.167	0.180	0.218	n/a

Beam details**Beam angles**

Beam angle 50%	Field angle 10%	Cutoff angle 2,5%
17.7°	26.2°	64.7°

Beam intensities

Peak intensity	Int. ratio in 120° cone	Int. ratio in 90° cone
9547 cd	1.0%	0.9%

Power

Power	Power factor	Power frequency
83.9 W	0.98	60 Hz

Nominal voltage	Voltage	Current
230 V	114 V	0.751 A

Beam intensities from 1-20m

1m	2m	3m	4m	5m	6m	7m	8m	9m	10m	11m	12m	13m	14m	15m	16m	17m	18m	19m	20m
3.3ft	6.6ft	9.8ft	13.1ft	16.4ft	19.7ft	23ft	26.2ft	29.5ft	32.8ft	36.1ft	39.4ft	42.7ft	45.9ft	49.2ft	52.5ft	55.8ft	59.1ft	62.3ft	65.6ft
9399lx	2350lx	1044lx	587lx	376lx	261lx	192lx	147lx	116lx	94lx	78lx	65lx	56lx	48lx	42lx	37lx	33lx	29lx	26lx	23lx
873.2fcd	218.3fcd	97fcd	54.6fcd	34.9fcd	24.3fcd	17.8fcd	13.6fcd	10.8fcd	8.7fcd	7.2fcd	6.1fcd	5.2fcd	4.5fcd	3.9fcd	3.4fcd	3fcd	2.7fcd	2.4fcd	2.2fcd